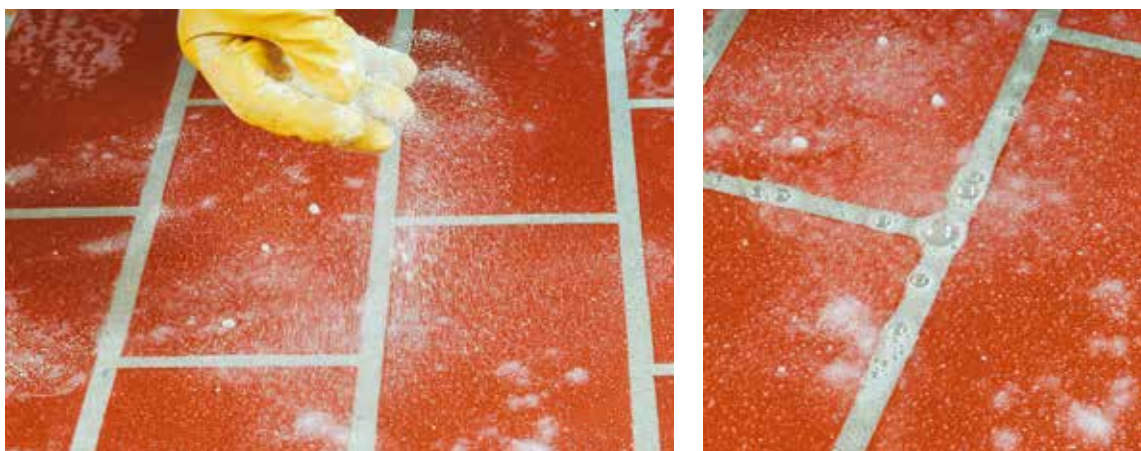




# BENFERCLEAN POLVERE

## Acid cleaner

- Cleaning of encrusted cement or tile adhesives and hardened grouts on bricks, terracotta, ceramics, porcelain stoneware, decorative stone, concrete and bathroom fixtures
- Cleaning of salpetre mold on terracotta, joints between tiles, plaster, etc
- Cleaning of concrete mixers, scaffolds, cranes and other construction site equipment
- Cleaning of stainless steel or chrome
- Cleaning of rust stains



### TECHNICAL FEATURES:

BENFERCLEAN POLVERE is a concentrated acid cleaner made up of organic acid. It is suitable for cleaning encrusted cement grouts, cement, mineral deposits and mold on surfaces in latex, ceramics, terracotta, hardened concrete and bathroom fixtures. Does not release toxic or harmful fumes.



TECHNICAL ASSISTANCE



INSURANCE GUARANTEE



TECHNICAL MEETINGS



PROFESSIONAL USE

### CONTRACT ITEM SPECIFICATIONS:

Removal of cementitious encrustments, scaling, and efflorescences of stone surfaces, ceramic products, cotto, sanitary ware through the application of an acid cleaner in powder such as BENFERCLEAN POLVERE by Benfer.

**METHODE OF USE:**

Dampen porous surfaces and cement joints until saturated prior to treatment. Protect any areas that are not acid resistant. Pour the product on the surface and spread it using a brush or an abrasive sponge, and then let it stand for 5 minutes. You can increase the dissolving action by scrubbing. Thoroughly remove the product and dirt with a sponge or a liquid vacuum cleaner. Rinse several times with water, removing all the soiled water.

**ADVICE:**

Do not use BENFERCLEAN POLVERE on surfaces that are not resistant to acids, such as marble and marble tiles (also reconstructed), as it would damage their aesthetic appearance with opaqueness and corrosion. Do not use on enameled tiles or other surfaces with enamel that is not acid resistant. Porous surfaces must be dampened until saturated prior to treatment. BENFERCLEAN POLVERE is not effective for removing greasy and oily substances.

**CLEANING:** Rinse several times with water, removing accurately the washing rinsing water.

**CONSUMPTION:** Coverage is normally 200 g per m<sup>2</sup>. This will vary depending on the type and quantity of material to be removed, and on porosity of the treated surface.

**PACKAGING:** BENFERCLEAN POLVERE is packaged in jars of 1 kg.

**SHELF LIFE:** 24 months in its original sealed packaging if kept protected from freezing temperatures and direct sunlight, at a temperature between 0°C and 40°C.

**PRODUCT TECHNICAL DATA**

Appearance:	White powder
Storage:	In its original packaging
Duration:	24 months
Inflammability:	No
Application temperature:	From + 5°C to + 40°C
Consumption:	Approx. 200 g/m <sup>2</sup>
Danger of harm:	Irritating to eyes and skin. Use safety goggles and wear suitable protective clothing

N.B. The information given in this chart is based on our best experience and indicative only. It must in any event be verified by the end user, who assumes all liabilities deriving from utilization of the product.